



# Katosi Women Development Trust (KWDT)

---

*Transforming lives; changing families of rural poor women.*

## Annual report 2011

---



### **the vision that inspires us**

Empowered rural women with  
productive livelihoods in health  
communities

### **the mission that guides us**

Enabling rural women to effectively  
manage their social, economic and  
political development processes for  
improved livelihoods

## Acknowledgements;

Katosi Women Development Trust with sincere gratitude wishes to thank donor agencies and individuals who have continuously supported our programmes all year round; KWDT has transformed lives and changed families of rural poor women through the various programs.

## KWDT Partners

Berea College  
Berea Union Church  
Drop in the Bucket  
FAWCO Foundation  
France Libertes  
Global Women's Water Initiative  
KWDT interns from Agradu  
Miva Netherlands  
Responsible Fishing Alliance  
Shebbear College  
SwissHand  
The Waterloo foundation  
Tudor Trust  
Women for Water Partnership

## Introduction

This year ended with 3 new groups allowed to join Katosi Women Development Trust bringing the number of women groups working together from 13 to 16 and increasing the number of women who share resources, knowledge and skills in an equitable manner from 285 by the end of 2010, to 365 by the end of 2011. This year, KWDT has expanded her services into Nama sub-county still within Mukono district.

*KWDT strategy is to empower women to enable them to identify, implement, and monitor all development programs and activities. This creates a sense of ownership of all programs and entrust women with responsibility to take charge of their development and also enable them to act as entry points in the community. The women trained as trainers (TOTs) in all KWDT programs increasingly pass on the knowledge to aid adoption of new practices and technology, change of attitudes and behaviours not only among groups members but in the communities as well.*

## KWDT Groups Members

No.	Name of group	No. of members	Date joined KWDT
1	Katosi Women Fishing & Dev't Association	28	1996
2	Bukwaya Women's group	26	2002
3	Muwumuza Women's group	19	2002
4	Bugoye Poultry Women's Group	20	2004
5	Kisakye Women's Group	27	2004
6	Kalengera Women's Group	18	2005
7	Bugolombe Women's Development Group	29	2005
8	Kulubbi Women's Group	20	2005
9	Bakyala Kwagalana	28	2007
10	Bulonda Kisoga Women's Group	22	2007
11	Twekembe Women's Group	20	2007
12	Ntanzi women's group	13	2008
13	Nakisunga Ntakafunvu	26	2009
14	Manyi ga mulimi Kiyoola	29	2011
15	Balabire Kuffe	16	2011
16	Basooka Kwavula	24	2011
	<b>Total membership</b>	<b>365</b>	

## KWDT ACTIVITIES AND ACHIEVEMENTS IN 2011.

KWDT activities are designed to provide a comprehensive empowerment approach to the women through the integrated programs of; Economic empowerment, health, leadership and political participation as well as environment conservation practices, lobbying and advocacy, capacity building and awareness raising through music and drama as cross cutting themes.

### A. ECONOMIC EMPOWERMENT.

Economic empowerment is so crucial for women as it enables them to explore other forms of empowerment such as the social and political. The economic empowerment program supports establishment of income generating activities through sustainable Agriculture, Micro credit and Entrepreneurship development programs.

#### i. Sustainable Agriculture.

Women are supported to acquire animals to enhance practice of sustainable agriculture. Animals are not only source of income but households gain and use dung and manure to enhance agricultural productivity. Bee keeping, mushroom farming fish farming and fruit and wood tree planting are the complementary activities supported in all groups. To sustain her programs, KWDT has created revolving funds for the various programs, for continuity of program benefits beyond the projects life. Other complimentary agricultural activities include fish farming, mushroom growing, and growing of fruit trees.

To date 112 cows are distributed among 90 households reaching 25% of KWDT members while 4 groups are engaged in fish farming and mushroom growing. The target is to enable more women access cows and more groups to engage in diverse agricultural productivity modes. .

Earlier known as a window in her village, Nakafu Margaret is now known and referred to as a woman with two cows !

Energy saving and cleaner Fish smoking technology has been introduced through the construction of a kiln to enable women preserve the fish harvested

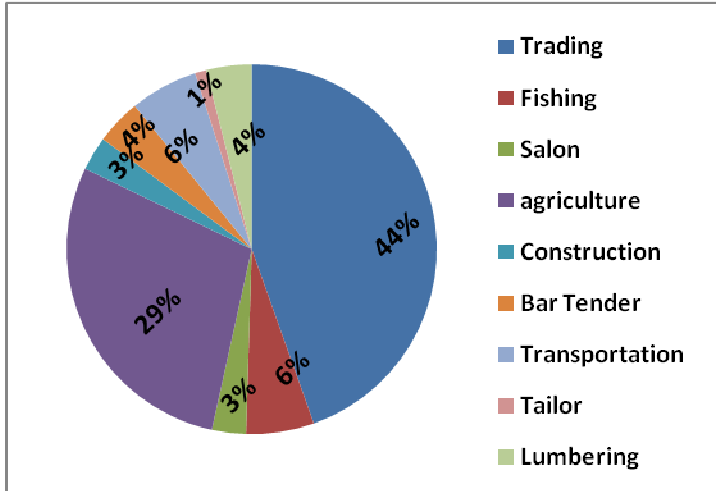
The improvement in fish farming has not happened easily, but with intense efforts of both staff and members to learn from other partners in this field and learning between the groups themselves. KWDT now produces the fish feeds and the fingerings for self sustenance and to reduce dependence on external suppliers. This does not only ensure quality for both feeds and fingerings, but reduces the costs as well, thus increasing profitability for the women engaged in fish farming.

Kateregga Lydia smokes fish from KWDT fish ponds on an improved kiln



**ii. Access to Micro credit.**

With personnel attached to the micro credit program this year, efficiency for women to access credit has improved greatly. KWDT women engage in various income generating activities as a result of increased access to credit.



**B. HEALTH.**

As incomes are established and increased at household level, women are confident to venture into other programs that will contribute to their wellbeing. Significant success in the various health related programs has been achieved this year.

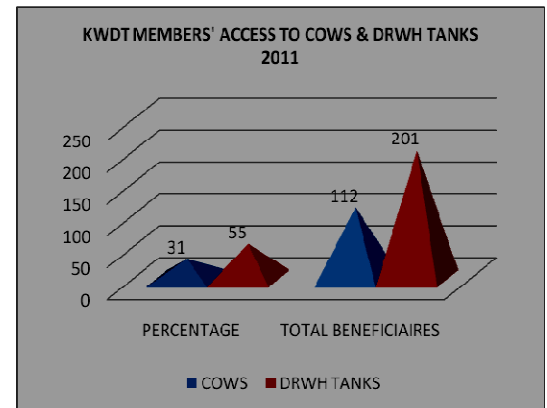
**i. Water, Hygiene and sanitation.**

**DRWH Tanks:** Access to water at household is increasing through the KWDT tank revolving scheme that supports households to access tanks and pay back in affordable installments to enable more members access the same facility. To date 201 households have been supported to acquire water tanks.



**Credit Officer offers women business advisory skills as part of the package.**

**Access to cows and tanks among KWDT members 2011**



To date KWDT has supported construction of 42 wells in schools and Communities to access clean safe water .

*Pupils of Ntenjeru Parents school, used to fetch water from un protected spring 2 kms away from the school. The school management committee, the village council and the women members of KWDT are responsible for the proper operation and maintenance of the facilities.*

Households are supported in the revolving manner to access funds and improve sanitation facilities where they pay back with no interest during group meetings. To date, KWDT has supported 102 households to access adequate sanitation through provision of Ecosan toilets and Ventilated Improved pit latrines.

**School sanitation:** Despite the improved sanitation at the household level, women expressed deep concern about the poor and alarming sanitation situation in many of the schools in this area where their children go. KWDT has supported 4 schools to acquire sanitation facilities and with the access of the water and sanitation, KWDT uses this as a strong hold to establish and train school sanitation clubs

**Water filtration:** KWDT promotes use of the bio sand water filters in the community through training women masons, in the construction of water filters. The women TOTs and masons do sensitize communities further on the maintenance of the bio sand water filters for increased use and adoption in the community. KWDT women have to date distributed 19 bio sand filters in the community;

- iii. **HIV/AIDS:** Access to information and addressing HIV/AIDS has been a need for women. KWDT this year enabled women access information, which was followed by testing and counseling. This reduced fear, stigma and women are happy KWDT is empowering them to address HIV/AIDS.

**C. Capacity building, Leadership and Political Participation**

KWDT relies on the empowered leaders to be able to influence group participation not only in decision making but in implementing the decisions made by the organization



**Bukwaya Women’s Group ; During bi-weekly meetings group members identify and select beneficiaries, make and monitor repayment for resources**



KWDT become more creative by introducing leaders’ exchange visits where by Chairperson of one group visits the other group to not only asses the performance of her fellow leader, but to interact with the members of the host group to know more about how they manage their activities.



**Muwumuza women's group during a bi-weekly meeting. Well placed and equipped leaders are important for progress of group and organizational activities.**

## Women Advocacy Clubs.

As women gain economic independence and wellbeing, they have been challenged to address communal problems and to engage in leadership at all levels and decision making. KWDT realized significant achievement when Ms. Muwanga was elected the Chairperson Local Council III for Mpunge Sub county, many women are now leaders in their community and on the water user committees. They earn respect from the community due to their various services they bring to the community and the feed back that they bring from the sub county meetings, bridging communication and information gaps between the leaders and the people.

Capacity building for staff members: was also intended to improve their efficiency and effectiveness in their service to the community. KWDT staff has participated in the meetings/workshops to share what and how KWDT is doing, and other trainings to build their individual capacity.

KWDT junior project officer attended the a one month SIDA International Climate Change Mitigation and Adaptation training in Norrkoping, Sweden on mitigating and adapting to climate change.

*“Apart from following up on sub county decisions and actions on water, am interested in following up on decisions in other areas such as agriculture because the decisions they make directly impact on all of us” . Rose Namukasa a member of the WAC committee.*



Immaculate Nansubuga is currently engaging women in tree planting training them and localizing the term “climate change”

Leaders’ exchange visits have been carried out among the leaders. The exercise has bore interesting results, great lessons and good examples for the visiting leaders, as well as revealing the various capacity gaps in the different groups for the secretariat to take note and work on improving and closing those capacity gaps.

## HOSTING RWSN PARTICIPANTS AT KATOSI



**KWDT women being trained in water testing and purification by the Global Women Water Initiative in July 2011**



02/12/2011 01:17

## PARTNERSHIPS

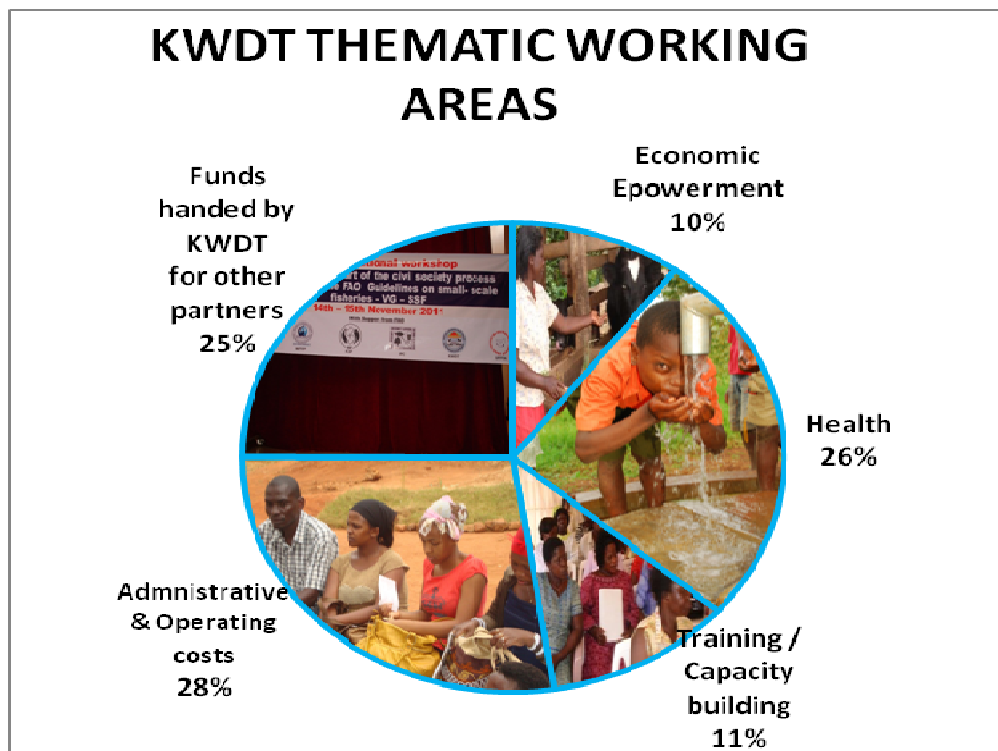
- ✓ In collaboration with Global Women Water Initiative women were trained in water filtration, water quality testing and in construction of bio sand water filters.
- ✓ KWDT as a member, and on behalf of the World Forum of Fish Harvesters and Fish workers (WFF), carried out successful national consultations for the development of the Voluntary Guidelines for Small Scale fisheries (VGSS) in November 2011. KWDT handles WFF funds and houses the secretariat of the network.

## TEAM VISITORS 2011

- ✓ KWDT hosted 22 students of Berea College; they lived with the women members of KWDT and 12 others of Shebbear College visiting women households.
- ✓ KWDT participated and later hosted participants of the Rural Water and Sanitation Network workshop that was held in Kampala in November 2011.
- ✓ Other women groups and organisations have visited KWDT to learn about our work, for example; Kids in Need, BURUDA.

## KWDT TOTAL ANNUAL INCOME AND EXPENDITURE

KWDT's total income from our partners to contribute to ongoing activities was 489,196,327 while local contribution was 84,443,152 from revolving funds, membership fees and interest.



We welcome anonymous feedback on this report.

Visit and learn more about what we do and to interact with us on the website at

[www.katosi.org](http://www.katosi.org)

Face book

<http://www.facebook.com/katosiwomen>

Twitter

<https://twitter.com/#!/katosiwomen>